

Dept. of Psychology Lab Preview

September 17, 2025

Get some pizza and a handout. We'll begin around 4:30.

The Paradox of Doing Research



How Research Works



▼ [Undergraduate Series in Psychology and Neuroscience](#)

New for the 2025-2026 academic year, the Undergraduate Series in Psychology and Neuroscience is an interdisciplinary forum open to all members of the Columbia community. Undergraduate majors in Psychology and Neuroscience and Behavior, Postbacs in Psychology, and students with interests in related fields are especially encouraged to attend. The aims of the series are to explore a wide variety of academic and practical topics; to hear from current students, faculty, alumni, and others in the field; and to build community. For questions, suggestions, or to get involved, please reach out to Nora M. Isacoff, PhD, Director of Undergraduate Research & Engagement (ni2237@columbia.edu).

[\[View series calendar\]](#)

This year, we have research talks from current grad students, current undergrads, & alumni. (See the handout/link on the website)

DEPARTMENT OF PSYCHOLOGY

[About](#) ▼ [People](#) ▼ [Undergrad](#) ▼ [Courses](#) ▼ [Graduate](#) ▼ [Postbac](#) ▼

- [Department Colloquium Schedule](#)
- [Monday Seminar Series](#)
- [University Seminar: Cognitive and Behavioral Neuroscience](#)
- [University Seminar: Language & Cognition](#)
- [Undergraduate Series in Psychology and Neuroscience](#)

COLUMBIA | Zuckerman Institute

[SCIENCE](#) | [PEOPLE](#) | [PROGRAMS](#) | [ENGAGE](#) | [EVENTS](#) | [NEWS](#)

< [Barnard.edu](#)



Cognitive Science
BARNARD COLLEGE

[Contact](#)

[Faculty](#)

[Major](#)

[Courses](#)

[Resources](#)

[Events](#)

Ways to be an RA

- Volunteer
- For course credit (PSYC 3950), 0 - 4 credits, 3 for psych major credit
 - Assisting in a lab
 - Proposing an independent study
- Work study (if eligible)
- Rarely: Paid positions
- Through other academic programs (e.g., Center for Undergraduate Global Engagement)

Requirements to be an RA

Research is exciting and fun (about 10% of the time) and hard and confusing (about 90% of the time).

- All positions require that you enter with curiosity, commitment, humility, and a willingness to work through lots of frustration.
- Some positions may require no experience or particular skills, other than the above.
- Some positions may require that you have particular experience or skills already.

1. Center for Justice; PI: Geraldine Downey (gd20@columbia.edu)
2. MetaCognition and Memory; PI: Janet Metcalfe; Lab Manager/Contact: Alex Litovchenko - al4877@columbia.edu
3. Social and Moral Cognition Lab; PI: Larisa Solomon; Lab Manager/Contact: James Nesbit - jen2146@columbia.edu
4. Cognitive Neuropsychology Lab; PI: Richard Waxman; Lab Manager/Contact: Annie Berkowitz - amb2594@tc.columbia.edu
5. CyberPsych; PI: Usha Barahmand; Contact: Stanley William Davis swd2117@columbia.edu
6. Social Cognitive and Neural Sciences Lab; PI: Jon Freeman; Lab Manager/Contact: Eleanor Farry - ef2815@columbia.edu
7. Infant Studies of Learning and Neurocognitive Development (ISLAND); PI: Natalie Brito – nhb2111@columbia.edu
8. Morris Lab; PI: Michael Morris; Lab Manager/Contact: Daniela Rodriguez Mincey - daniela.rodriguez-mincey@columbia.edu
9. ACT (Authenticity, Choice, and Technology) Lab; PI: Sheena Iyengar; Lab Manager/Contact: Malavika Krishnamachari - mk4182@columbia.edu
10. COMBO Lab; PI: Dani Dumitriu; Lab Manager/Contact: Marissa Lanoff - CERH@cumc.columbia.edu
11. COMBO National Lab; PI: Dani Dumitriu; Lab Manager/Contact: Catriona Lamerique - CERH@cumc.columbia.edu
12. InSync Lab; PI: Andréane Lavallée - al4196@cumc.columbia.edu
13. DOOR Lab PI: Dani Dumitriu; Lab Manager/Contact: Alessia Manganaro- am4874@cumc.columbia.edu and Perla Ontiveros - po2307@cumc.columbia.edu
14. IMPression in ACTION Lab; PI: Chujun Lin - cl4767@columbia.edu
15. New York Institute for Cognitive Science and the Humanities; PI: Nora Isacoff – ni2237@columbia.edu
16. Translational Research on Affective Disorders and Suicide Laboratory; PI: Randy P. Auerbach, PhD; Lab Manager/Contact: Jamaal Spence - jamaal.spence@nyspi.columbia.edu
17. Plasticity of Cognitive Maps; PI: Tina Kao – tk2436@columbia.edu

The Center for Justice

Dr. Geraldine Downey



MISSION & CORE PRINCIPLES

Mission

To transform approaches to justice from being driven by punishment and retribution to being centered on prevention, healing and accountability.



Policy-By-Proximity

Ensuring that justice system-impacted and marginalized individuals help shape policy reform and intervention design.



Investing in Communities

Empowering communities most impacted by the justice system through education, leadership development, and employment pathways.



Evidence-Based Interventions

Using research, data, and evaluation to strengthen justice reform programs by measuring meaningful individual and community outcomes.



PROJECT RESTORE

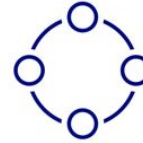
A **gang-violence intervention** program investing in **high-risk, influential youth** from rival street crews, **transforming their lives, networks, and communities** through holistic support via a community-university-government partnership.



*Case
Management*



*Credible
Mentorship*



*Inside
Circle*



Life Skills

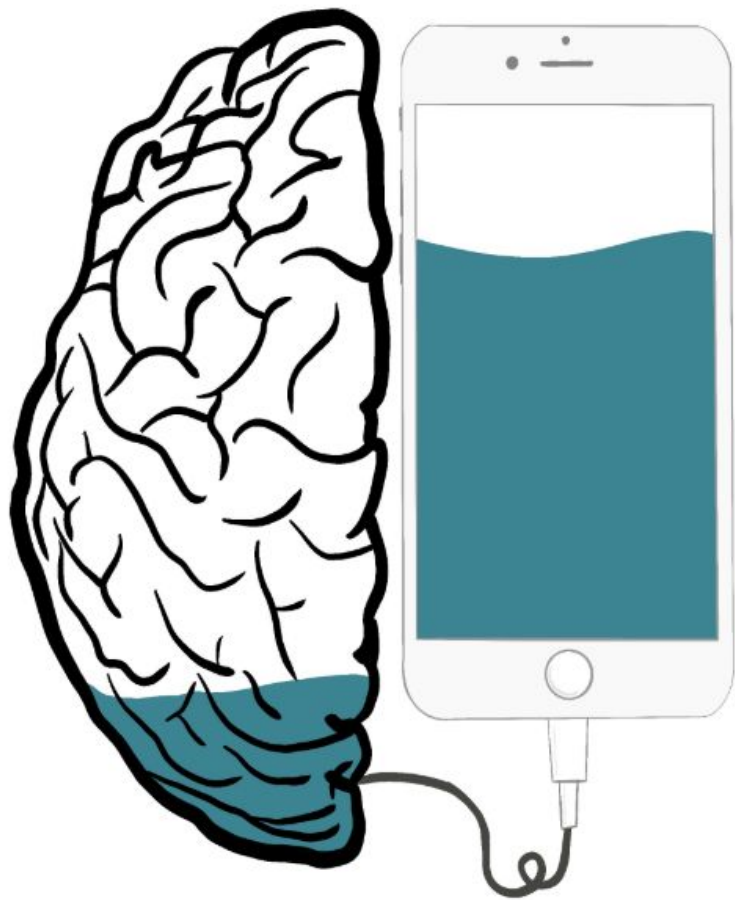


Internship

Email Ben Silver
(bms2202@columbia.edu) if
you're interested in getting
to know the Center!

MetaCognition & Memory Lab

Dr. Janet Metcalfe
Alex Litovchenko - al4877@columbia.edu



Social & Moral Cognition Lab

PI: Larisa H Solomon

We study how children and adults...



...make moral decisions

...reason about and interact with people who are different from them

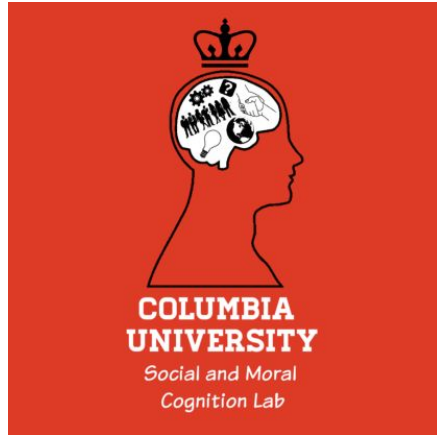


...reason about supernatural entities (e.g., God)

...perceive the criminal justice system



Scan Here to Find Our Application



Cognitive Neuropsychology Lab

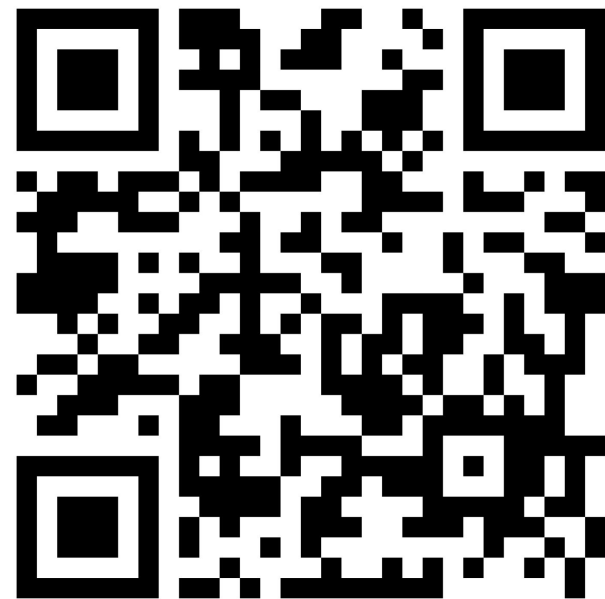
PI: Richard Waxman, PhD

neuropsychology@tc.columbia.edu
amb2594@tc.columbia.edu

Interested?

1. Scan this QR code and fill out the interest form!
2. Watch your email for next steps!

TEACHERS COLLEGE
COLUMBIA UNIVERSITY



CyberPsych Lab

PI: Dr. Usha Barahmand
Lab Coordinator: Stanley Davis

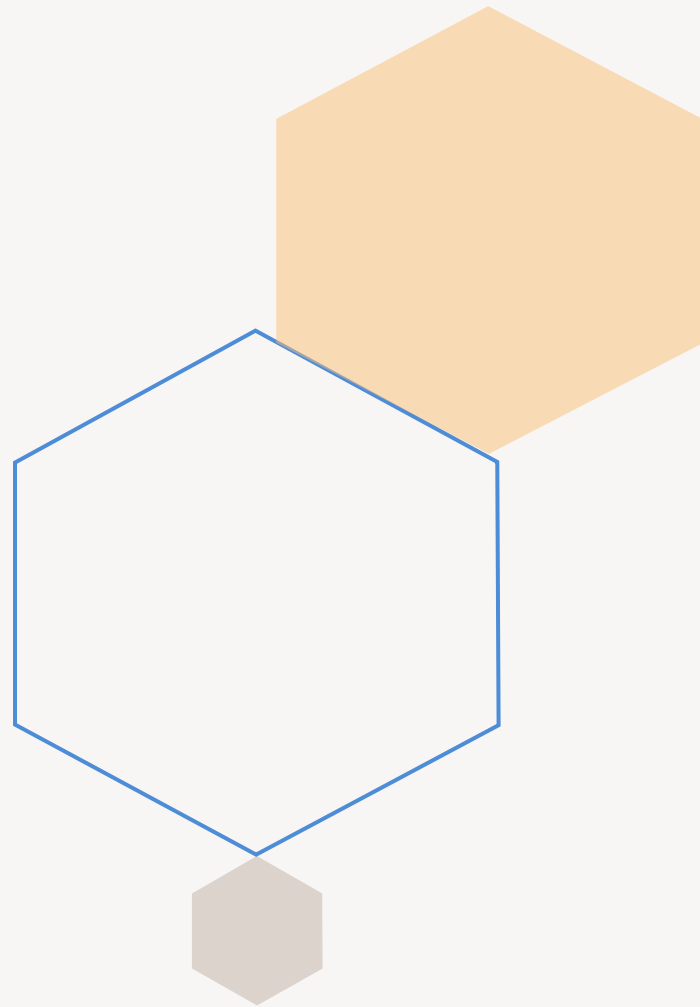
Dr. Usha Barahmand's CyberPsych Lab

Research in Clinical Psychology and Personality

Dr. Barahmand, ub2142@columbia.edu

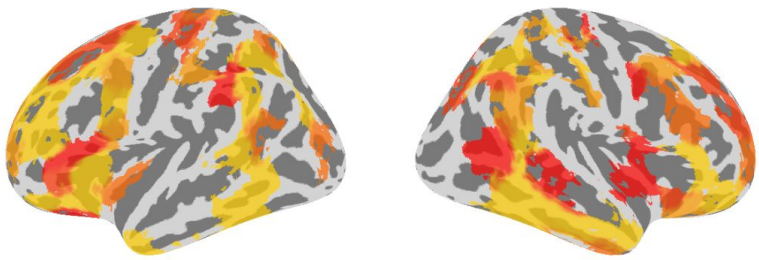
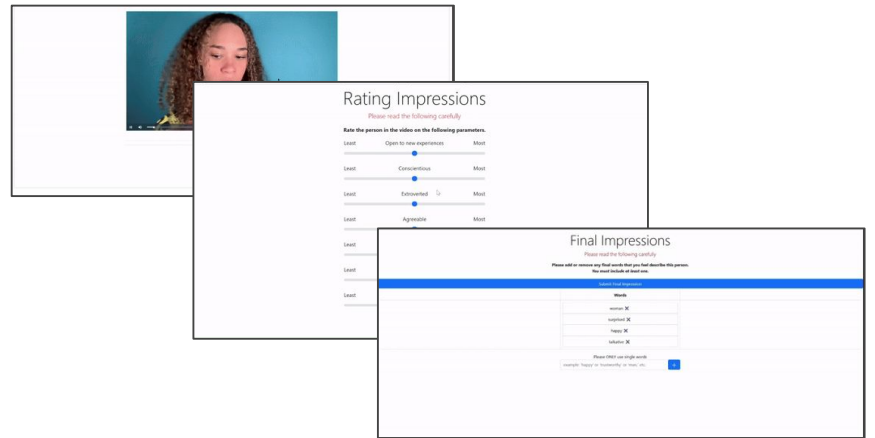
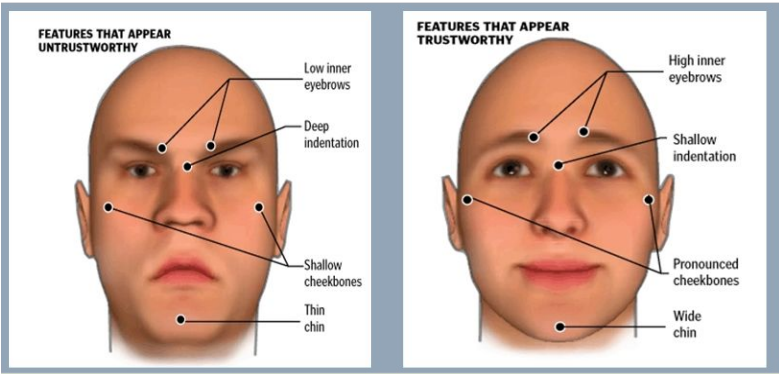
Stanley Davis, swd2117@columbia.edu

—If you are interested, please reach out to Dr. Barahmand and/ or Mr. Stanley Davis over email with your GPA and CV.



Social Cognitive and Neural Sciences Lab

PI: Dr. Jon Freeman
Lab Manager: Eleanor Farry



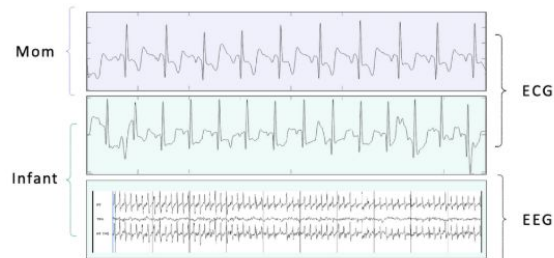
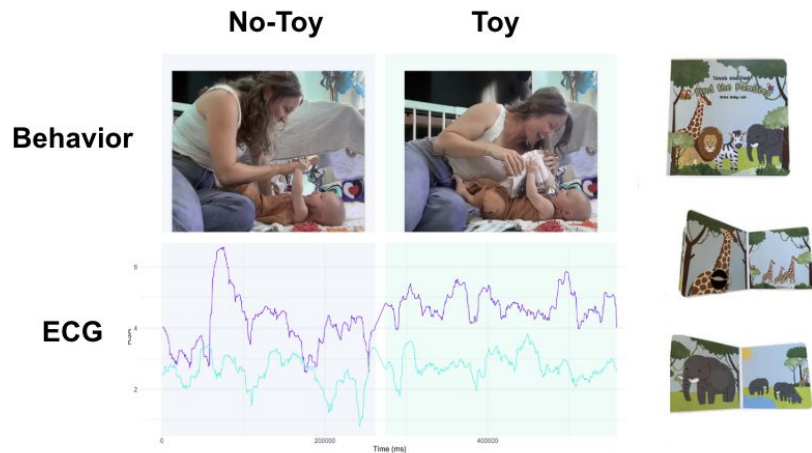
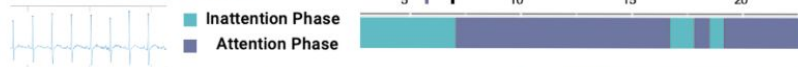
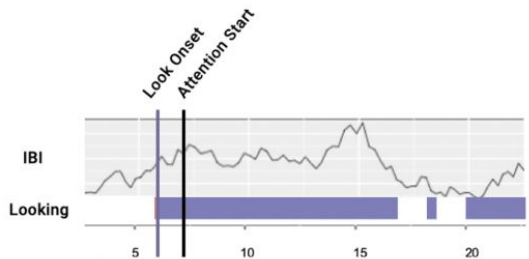
freemanlab.org/join
 columbia.freemanlab@gmail.com

Infant Studies of Learning & Neurocognitive Development

PI: Dr. Natalie Brito
Lab Manager: Chloe Rice



ISLAND LAB
 britobabylab.com
 britobabylab@gmail.com



CHOICE ARCHITECTURE LAB

(Formerly ACT Lab)

PI: Professor Sheena Iyengar

Lab manager: Mala Krishnamachari
Reach me at: mk4182@columbia.edu

The Jam Study:



Prospective RAs,
fill out this form!

The Morris Lab

PI: Prof. Michael Morris
Rep: Daniela Rodriguez-Mincey



Michael Morris's Culture & Cognition Lab is using cutting-edge experiments, computational modeling/ data science, and global collaborations to unpack **how we shape culture, and how culture shapes us.**

Or scan here!



Read more and find our interest form here:

bit.ly/MorrisLab

Columbia Business School Behavioral Research Lab

What We Investigate

We explore human behavior in organizational and consumer contexts, focusing on decision-making, judgment, and social interaction through both in-person and online experimental research.

Current Opportunities

Interested students should check [this page](#) for future opportunities or reach out to the provided email.

Lab Manager: Lucie Clifford



Learn more and Apply

Or reach out to:

behaviorallab@gsb.columbia.edu



P.I. Dani Dumitriu, MD, PhD

Understanding Early Relational Health Through
Research & Interventions

- COMBO
- COMBO National
- InSync (Coding)
- Door Lab

COMBO

COVID-19 MOTHER BABY OUTCOMES STUDY

- Founded in 2020 to examine impact of pandemic stress & exposure on child development
- 600+ families followed from pregnancy through 4 years
- Producing one of the largest longitudinal datasets of pandemic pregnancy outcomes



RESEARCH

- Collect biological samples, parent surveys, video assessments and video interventions
- Provide mental health supports, interventions and resources

NATIONAL

The COMBO National Study aims to build a large, diverse national cohort to study how early relational health (ERH)—bonding, sensitivity, and emotional connection—shapes child development, caregiver well-being, and long-term health.

Our Goal

Using online caregiver questionnaires and video assessments of relationships and development, we will generate the evidence needed to drive equitable policies, and better child and family health.




How can you help?

We are looking for students to help conduct these video assessments with families and support participant follow-up.

InSynC

Interpersonal Synchrony and Connection

- Frame-by-frame coding of parent-infant play & interaction
 - Focus on gaze, affect, gestures ~
Which are indicators of connection
 - Coders are trained for inter-rater reliability
 - Data helps us to predict attachment, and social-emotional outcomes
- 
- Boris Coding and WECS Coding measure emotional connection and communication quality
 - We also code maternal sensitivity during diaper change and still-face interactions, which serve as precursors for predicting attachment

The DOOR Lab

DEVELOPMENTAL ORIGINS OF RESILIENCE

Uncovering the science of resilience through a robust bottom-up basic science mechanistic approach for novel disease-prevention strategy



P.I. Dani Dumitriu,
MD, PhD



Disease Prevention

Harness resilience circuitry for health promotion



Multi-Species

Study lab mice, lab rats, wild rats and humans



Multi-Scale

From single neuron to whole-brain circuits



Multi-Circuit

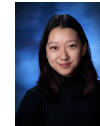
When no method exists, we develop one



Christine Austin, PhD



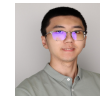
Alessia Manganaro, D Phil



Perla Ontiveros-Angel, PhD



Erika Stewart, PhD



The DOOR Lab

STUDENT PROFILE

Interested in pursuing a graduate degree in Basic Sciences:

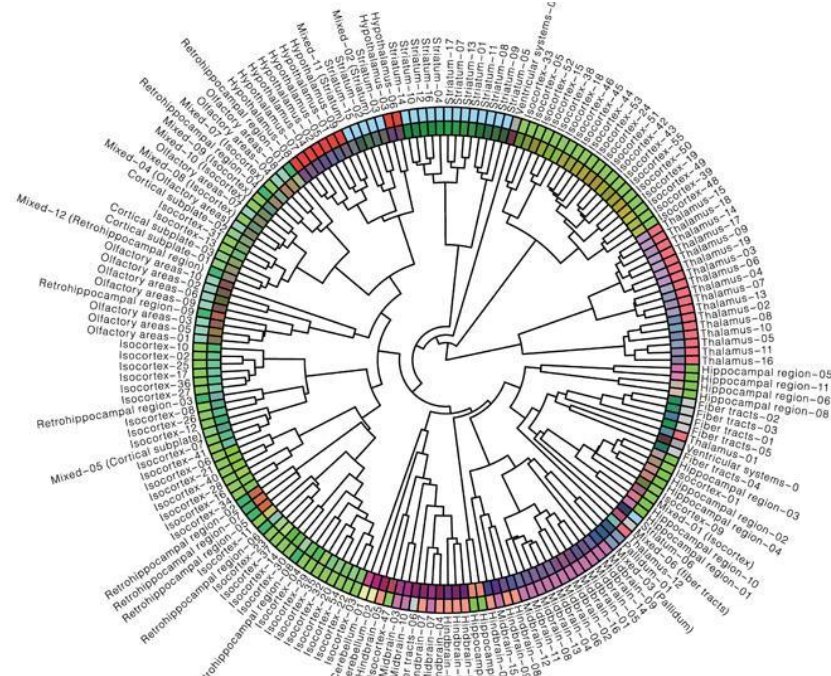
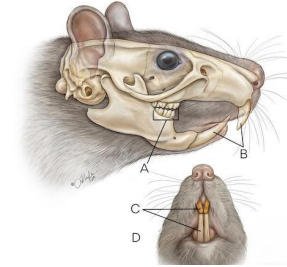
- Preclinical animal models
- Neuroscience and Behavior
- Systems Biology
- Computational Neuroscience

Time Commitment

12-20 hours a week (may include some remote work)

Longevity: 1-2 Years MINIMUM

- Supervised Research
- Mentoring for Academic Credits
- Senior Thesis Projects



THANK YOU!

Volunteer with one of our initiatives within the Center for Early Relational Health

Email us at CERH@cumc.columbia.edu

Remember to attach your Resume/CV



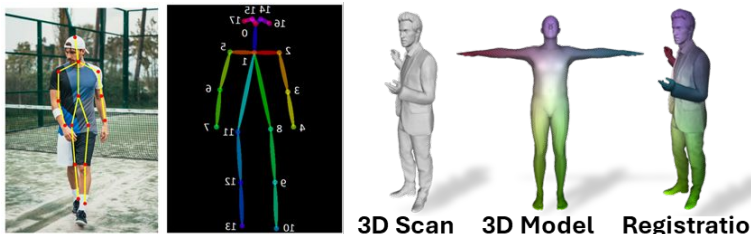
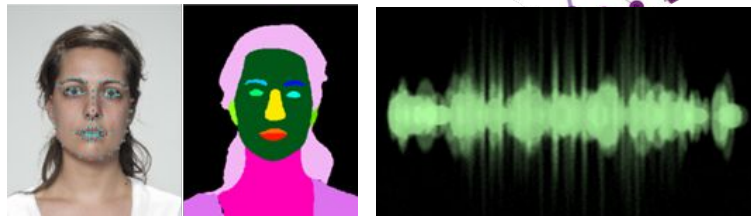
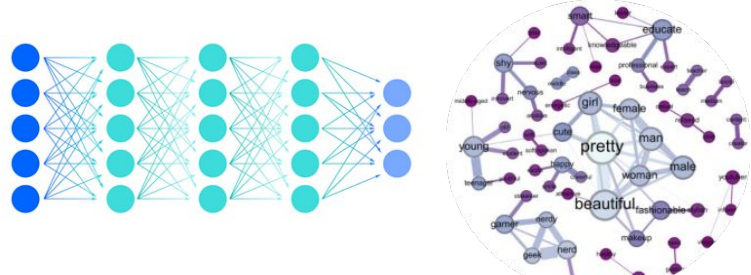
Scan me!

IMPression in **ACT**ion Lab (aka **IMPACT** Lab)

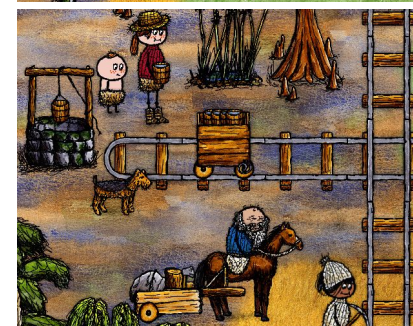
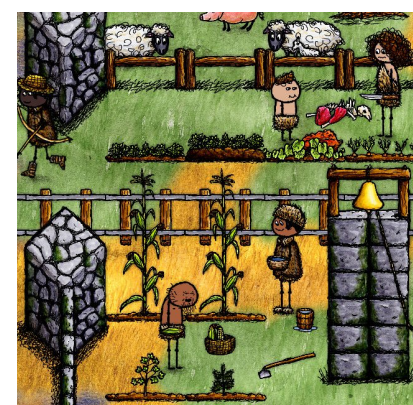
PI: Dr. Chujun Lin



Field Experiments



Artificial Intelligence



Computer Games

Join us!! <https://rb.gy/5kffsf>

Are you interested in learning more about neuroscience RA positions at the Zuckerman Institute?

Contract Professor Sarah DeMoya
(sed2182@columbia.edu)



New York Institute for Cognitive Science and the Humanities

PI: Dr. Nora M. Isacoff

(Website
forthcoming
shortly!)

My scholarship centers around the question of how we, as humans, construct meaningful categories: how these labels do and don't serve us, letting us make sense out of senselessness, connecting us with our identities and communities, enabling us to communicate and advocate, but also leading us astray, dividing us, and forestalling progress.

My recent/current research

Neurodiversity

[Self-communication](#)

Psychology education

Diverse discourse

Cogsci in fiction

Qualitative Research Methods



New York Institute for Cognitive Science and the Humanities

PI: Dr. Nora M. Isacoff

Although my RA positions are currently filled, please fill out a form if you are interested. It is very possible that positions will open up. If so, I will be in touch.

